



# GMT MONTHLY MEMBERSHIP PROGRESS REPORT

Results as of: 5/31/2018

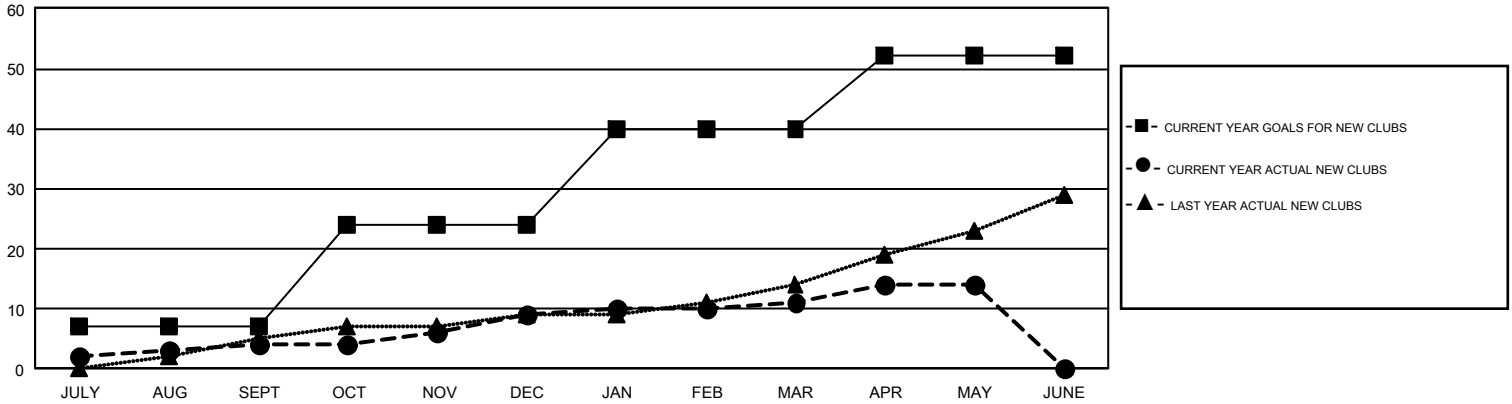
## GMT Constitutional Area 1, Group E

GMT: STACEY JONES

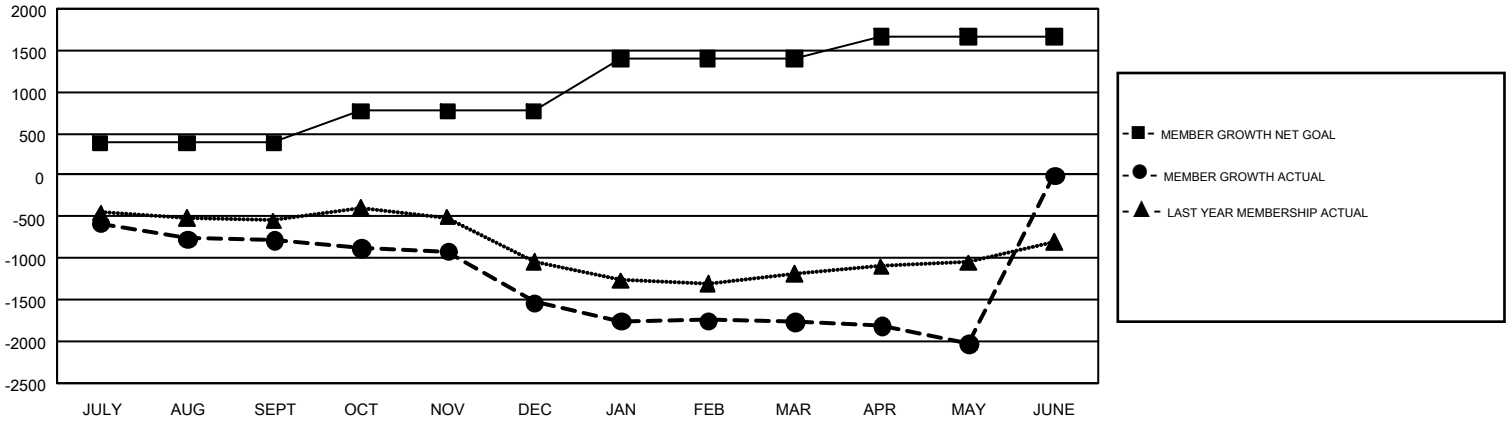
REPORT DOES NOT INCLUDE CLUBS IN UNDISTRICTED AREAS.

Clubs				Members			
RESULTS FOR 2017-2018				RESULTS FOR 2017-2018			
QUARTER	NEW CLUB GOAL	NEW CLUBS	DROPPED CLUBS	QUARTER	MEMBER GROWTH NET GOAL	MEMBER GROWTH ACTUAL	DROPPED MEMBERS ACTUAL (including transfers)
JULY/AUG/SEPT	7	4	9	JULY/AUG/SEPT	385	864	1,529
OCT/NOV/DEC	17	5	20	OCT/NOV/DEC	381	887	1,518
JAN/FEB/MAR	16	2	8	JAN/FEB/MAR	636	1,061	1,148
APR/MAY/JUNE	12	3	6	APR/MAY/JUNE	260	872	1,045

GOALS AND ACTUAL NEW CLUBS CUMULATIVE



GOALS AND ACTUAL MEMBERS CUMULATIVE



DROPPED CLUBS: 43	862 CLUBS OF 1,569 ADDED 1 OR MORE NEW MEMBERS	<b>GENDER DISTRIBUTION</b> MALE                    23,397 (63.95%) FEMALE                   13,192 (36.05%)
<b>DROPPED MEMBERS</b> DECEASED                    575 CLUB CANCELLED               345 OTHER                            4,313 <hr/> TOTAL                            5,233	<a href="#">CLICK HERE FOR CUMULATIVE MEMBERSHIP DATA</a>	TOTAL FAMILY UNIT MEMBERS                    6,765  FAMILY MEMBERS PAYING HALF DUES               3,467